

# ***EVEREST***

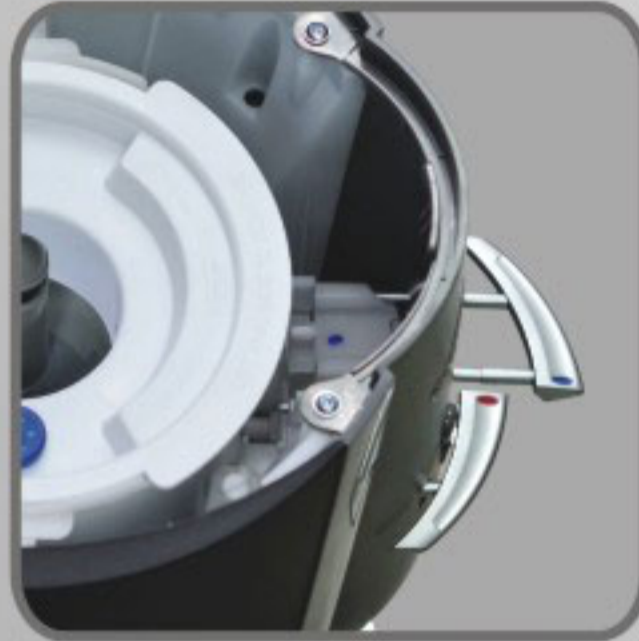
***Water Cooler***



# Everest

## Water Cooler

Crystal Mountain is taking cooling the waters of the world to new heights with the introduction of the Everest. Its sleek two toned aesthetic will enhance any space. The sturdy and ergonomic faucet handles are 177.8mm (7 inches) higher than traditional units, which enable effortless dispensing. The quickly removable side panels facilitate access to all electrical components for easy maintenance and servicing. The innovative removable reservoir and faucet assembly make the cleaning and sanitizing process fast and simple. Crystal Mountain proves that anything is possible when there is a drive to overcome all obstacles.



Sturdy Metal Faucet Handles



Removable Reservoir/Faucet Assembly (patent pending)



Replaceable Lower Front Panel with Optional Integrated Cup Dispenser



Retrofitted to Become a Point of Use Dispenser

## Features

- Modern, sleek & stylish design
- Innovative removable reservoir/faucet assembly (patent pending)
- Ergonomic faucet height
- High gloss finish
- DryGuard™ - Patented no spill system
- Energy Star certified
- Sturdy metal faucet handles
- Easily removed ABS side panels
- Maintenance-friendly
- Replaceable lower front panel with optional integrated cup dispenser
- Retrofitted to become a Point of Use dispenser
- 2011 Aqua Awards - First Place



Point of Use Kit



## DryGuard™

Crystal Mountain's patented sealed no spill system, the DryGuard™ protects floors against leaks caused by cracked or faulty bottles.



## Performance & Specifications

### General

An air-cooled water dispenser with a compressor-driven refrigeration system and a removable reservoir for sanitizing. Available in hot + cold, and ambient + cold

### Cooler Cabinet

Standard colour in black and grey. Other colours available for high volume orders

### Faucet Type

Covered one-piece mechanical faucets protect the faucet spout from contamination, are extra durable and add to the stylish presentation

### Cold Water Tank Specifications

HDPE casing with 2.4L (0.6 gal) volume

Cold water cooling capacity of 1L (0.3 gal)/hour based on 21°C (69.8°F) room temperature

### Cold Water Thermostat

Preset at factory to dispense water at temperatures from 4-10°C(39.2-50°F)

Adjustable cold control located at back of cabinet

### Hot Water Tank

Stainless steel #304 casing with 1.1L (0.3 gal) volume

Hot water capacity of 4.0L (1.2 gal)/hour based on 21°C (69.8°F) room temperature

### Hot Water Thermostat & Heaters

Automatic thermostat set at temperature range of 74-92°C (165.2-197.6°F)

Manual thermostat reset in case of automatic thermostat failure

ON/OFF switch is located at back of cabinet

### Compressor

Hermetically sealed reciprocating compressor

(220-240VAC 50Hz) (100-115VAC 60Hz)

**Noise (Sound Power Level):** 44dB

**Refrigerant Type:** R134a

**Refrigerant Charge:** 30g (1.1oz)



## Dimensions & Freight Data

Model Number	Products Dimensions WxDxH (mm/in.)	Box Dimensions WxDxH (mm/in.)	Product Weight (kg/lb)		Product Boxed Weight (kg/lb)		Loading Qty.	
			H&C	C&C	H&C	C&C	20FT	40FT
Everest Bottle water cooler without cup dispenser	319x310x1053mm	330x330x1070mm	12.2 kg	11.5 kg	13.5 kg	12.8 kg	238 units	504 units
	12.5"x12.1"x41.4"	13.0"x13.0"x42.1"	27.0 lb	25.3 lb	29.8 lb	28.2 lb		
Everest Bottle water cooler with cup dispenser	319x327x1053mm	330x330x1070mm	12.6 kg	11.9 kg	13.9 kg	13.2 kg	238 units	504 units
	12.5"x12.9"x41.4"	13.0"x13.0"x42.1"	27.7 lb	26.2 lb	30.7 lb	29.1 lb		
Everest POU water cooler without cup dispenser	319x310x1058mm	330x330x1070mm	12.6 kg	11.6 kg	14.0 kg	12.9 kg	238 units	504 units
	12.5"x12.1"x41.7"	13.0"x13.0"x42.1"	27.7 lb	25.6 lb	30.9 lb	28.4 lb		
Everest POU water cooler with cup dispenser	319x327x1058mm	330x330x1070mm	13.0 kg	12.1 kg	14.4 kg	13.4 kg	238 units	504 units
	12.5"x12.9"x41.7"	13.0"x13.0"x42.1"	28.6 lb	26.7 lb	31.8 lb	29.5 lb		

All performances are tested in a controlled environment, certified by a third party. To learn more about these standards, please speak to your Crystal Mountain representative.



### **Crystal Mountain Products Limited**

#### **North American Sales Office**

11925 -145<sup>th</sup> Street  
Edmonton, Alberta  
Canada T5L 2H4  
Tel: 1 800 878 6422  
Tel: 1 780 454 4545  
Fax: 1 780 454 9816  
E-mail: [sales@crystalcoolers.com](mailto:sales@crystalcoolers.com)

#### **European Sales Office**

Fence House, Fence Avenue  
Macclesfield, Cheshire  
United Kingdom SK10 1LT  
Tel: +44(0) 1625 439 111  
Fax: +44 (0) 1625 502 527  
E-mail: [cmeurope@crystalcoolers.com](mailto:cmeurope@crystalcoolers.com)

### **Crystal Mountain International Limited**

#### **Hong Kong Sales Office**

Room 610, Winfield Commercial Building  
6-8a Prat Avenue, Tsimshatsui  
Kowloon, Hong Kong  
Tel: (852) 2368 1989  
Fax: (852) 3017 6727  
E-mail: [cmasia@crystalcoolers.com](mailto:cmasia@crystalcoolers.com)

**Website: [www.crystalcoolers.com](http://www.crystalcoolers.com)**

*Crystal Mountain has a policy of continuous development and reserves the right to change specifications without notification.*

SEVB REV1212